



Creators of

IR-Thermal System



- Speed up mold set up
- Reduce cycle time
- Ensure quality

www.plexpert.ca



Industrial thermal camera

Temperature plays the most important role in injection molding. This is why PLEXPART puts more than 25 years of process experience in the plastic business into a worldwide unique product.

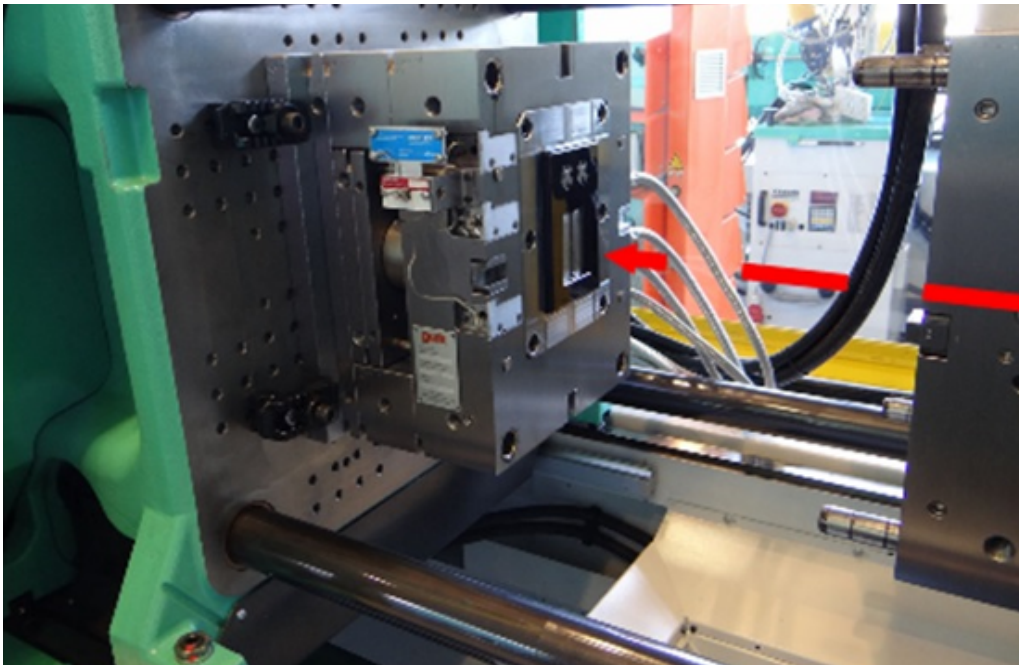
With **IR-ThermalSystem**, a setter can reduce cycle time and ensure a stable process. Moreover, a quality manager can be sure to have a constant part quality.

Changeable lenses ensure the best view to any size of plastic parts.

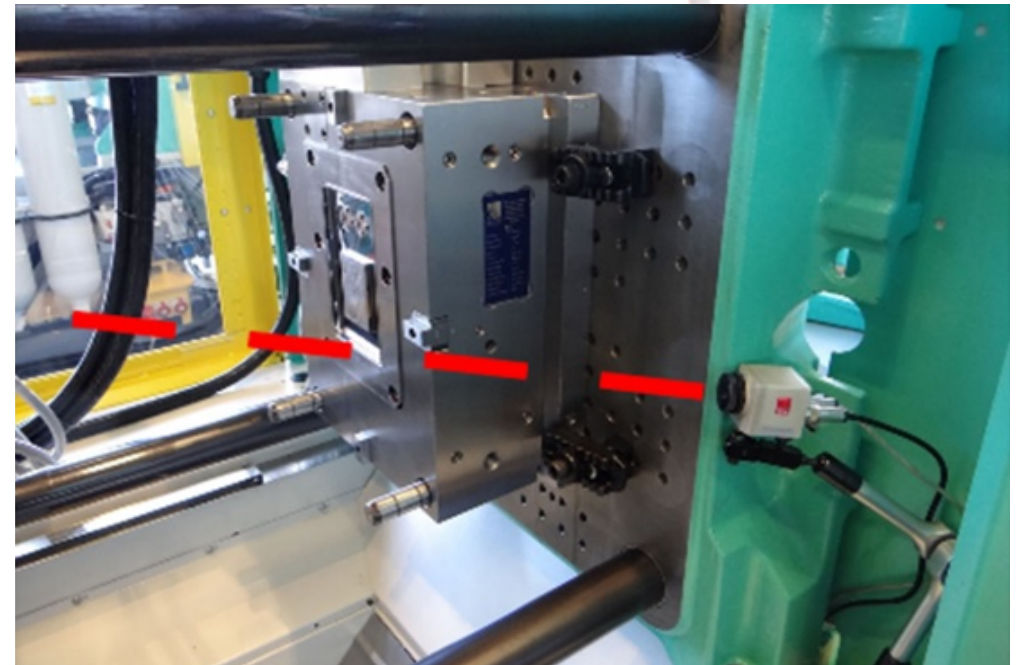
Whatever can be seen by the camera will be verified - from small connectors up to large bumpers.

With this:

- Cycle time can be reduced
- Defect causes are detected
- Part quality is ensured



From time to time, dimensions are measured and visual control of the parts take place in production. If changes are found, the question is: "What was the cause and when did the quality start to change?"



From one shot to another IR-ThermalSystem verifies the temperature of the part. If part related boundaries are exceeded, alarms will be sent automatically. This ensures that appropriate measures can be taken right away.



Made for IoT Industry 4.0



Cloud connection

- Flexible access to process data
- Interaction with IoT objects
- Scalable performance



IRDAS software

- Easy to use
- In-line temperature monitoring
- Continuous process documentation



IRTS camera

- Robust housing
- Variety of lenses
- Fast set up on any machine



D.I.O.

- Digital / Analog input and output
- Good part / bad part signal
- Communication with machine / robot



Boost
your process
intelligence



www.plexpert.ca
contact@plexpert.ca



Canada - Deutschland - ประเทศไทย - 中国